



Estd.: 2001



ISO 9001 : 2000
CERTIFIED COLLEGE



Sri Indu College of Engineering & Technology

An Autonomous Institution under UGC

Recognized under 2(f) and 12(B) of UGC Act 1956

NBA & NAAC Accredited, Approved by AICTE and

Permanently affiliated to JNT University, Hyderabad.

4.1.1 - The Institution has adequate infrastructure and physical facilities for teaching-learning, viz., classrooms, laboratories, computing equipments, etc.

Sl. No.	Particulars	Link
1	ECE Infrastructure	https://sriindu.ac.in/ece/
2	CSE Infrastructure	https://sriindu.ac.in/cse/
3	EEE Infrastructure	https://sriindu.ac.in/eee/
4	IT Infrastructure	https://sriindu.ac.in/it/
5	MECHANICAL Infrastructure	https://sriindu.ac.in/me/
6	CIVIL Infrastructure	https://sriindu.ac.in/ce/
7	CSE (DS) Infrastructure	https://sriindu.ac.in/cse/
8	CSE (AI&ML) Infrastructure	https://sriindu.ac.in/cse/
9	CSE(CS) Infrastructure	https://sriindu.ac.in/cse/
10	CSE(IoT) Infrastructure	https://sriindu.ac.in/cse/
11	CSIT Infrastructure	https://sriindu.ac.in/it/
12	H&S Infrastructure	https://sriindu.ac.in/humanities-basic-sciences/
13	Library Infrastructure	https://sriindu.ac.in/library/
14	Physical facilities	https://sriindu.ac.in/canteen/ , https://sriindu.ac.in/auditorium/



Sush
PRINCIPAL
Sri Indu College of Engineering and Technology
(V): SHERGUDA-501 510,
Ibrahimpatnam(M), R.R.Dist.

4.1.1 - The Institution has adequate infrastructure and physical facilities for teaching learning, viz., classrooms, laboratories, computing equipments, etc.



SRI INDU COLLEGE OF ENGINEERING & TECHNOLOGY

(AUTONOMOUS INSTITUTION UNDER UGC, NEW DELHI)

ACCREDITED BY NBA & NAAC

APPROVED BY AICTE, NEW DELHI,

AFFILIATED TO JAWAHARLAL NEHRU TECHNOLOGICAL UNIVERSITY, HYDERABAD

SHERIGUDA(V), IBRAHIMPATNAM(M), R.R.DIST. – 501 510. TELANGANA

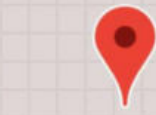
ICT Tools based Classrooms



Sush
PRINCIPAL
Sri Indu College of Engineering and Technology
(V): SHERIGUDA-501 510,
Brahmapatnam(M), R.R.Dist.



GPS Map Camera



Google

Sheriguda, Telangana, भारत

Sri Indu college of engineering, SRI INDU COLLEGE OF ENGINEERING & TECHNOLOGY,
Auditorium - Sri Indu Main Block Rd, Sheriguda, Telangana 501510, भारत

Lat 17.210125°

Long 78.611878°

14/12/21 02:58 PM



Sush
PRINCIPAL
Sri Indu College of Engineering and Technology
(V): SHERIGUDA-501 510,
Brahmapatnam(M), R.R.Dist.



Sheriguda, Telangana, भारत

Sri Indu college of engineering, SRI INDU COLLEGE OF ENGINEERING & TECHNOLOGY,
Auditorium - Sri Indu Main Block Rd, Sheriguda, Telangana 501510, भारत
Lat 17.210125°
Long 78.611878°
14/12/21 02:58 PM



Sooth
PRINCIPAL
Sri Indu College of Engineering and Technology
(V): SHERIGUDA-501 510,
Brahampatnam(M), R.R. Dist.



Sush
PRINCIPAL
Sri Indu College of Engineering and Technology
(Vill): SHERIGUDA-501 510,
Brahmapatnam(M), R.R.Dist.



Shobh
PRINCIPAL
Sri Indu College of Engineering and Technology
(Vill): SHERGUDA-501 510,
Ibrahimpatnam(M), R.R.Dist.

Campus Infrastructure



Main Block
Department of CSE & IT Block



ECE Block



Sri Indu
PRINCIPAL
Sri Indu College of Engineering and Technology
(VI): SHERIGUDA-501 510,
Brahmapatnam(M), R.R. Dist.



Mech / Civil Block



First Year Block



Soob
PRINCIPAL
 Sri Indu College of Engineering and Technology
 (Vill): SHERIGUDA-501 540,
 Ibrahimpatnam(M), R.R.Dist.



Central Library



Shobh
PRINCIPAL
 Sri Indu College of Engineering and Technology
 (VH): SHENIGUDA-501 510,
 Brahmapatnam(M), R.R.Dist.



Girls Hostel Block



Sush
PRINCIPAL
 Sri Indu College of Engineering and Technology
 (VH): SHERIGUDA-501 510,
 Ibrahimpatnam(M), R.R.Dist.

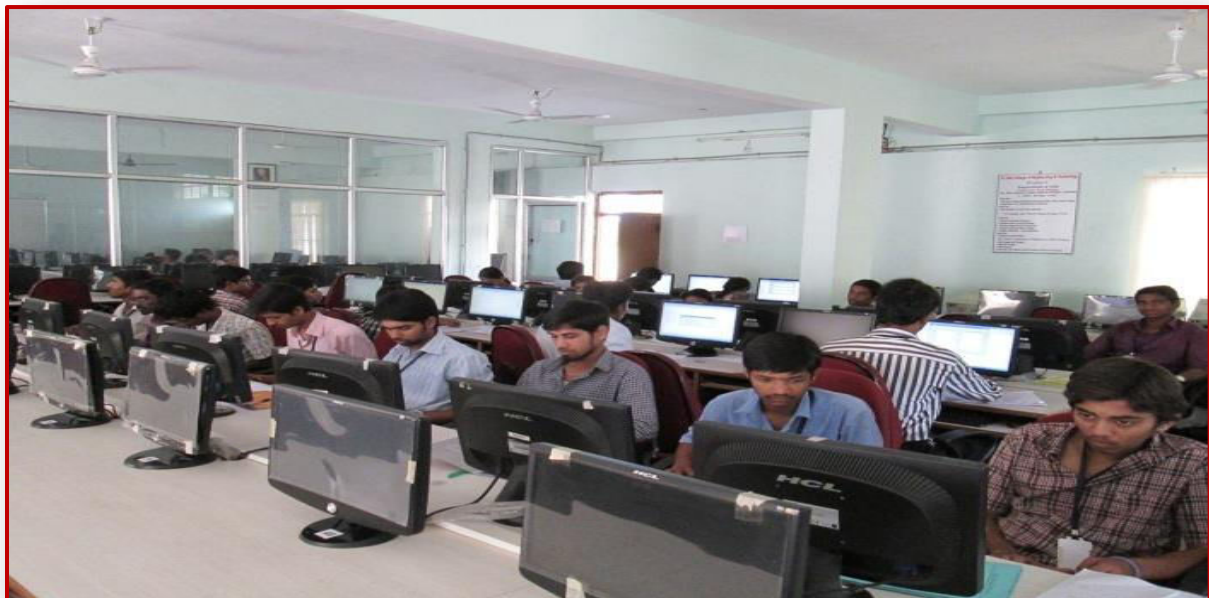
Physical Laboratories

**DEPARTMENT OF ELECTRONICS &
COMMUNICATIONS ENGINEERING**

ELECTRONIC DEVICES & CIRCUIT LAB



BASIC SIMULATION LABORATORY



Sush
PRINCIPAL
Sri Indu College of Engineering and Technology
(VIR): SHERIGUDA-501 510,
Brahmapatnam(M), R.R.Dist.

ELECTRONICS CIRCUIT ANALYSIS LAB



PDC LABORATORY



Shobh
PRINCIPAL
Sri Indu College of Engineering and Technology
(VHT): SHERGUDA-501 540,
Brahmapatnam(M), R.R.Dist.

VLSI Laboratory



Microwave and Optical Communication Lab:



Sush
PRINCIPAL
Sri Indu College of Engineering and Technology
(VI): SHERIGUDA-501 510,
Ibrahimpatnam(M), R.R.Dist.

E-CAD AND VLSI LABORATORY



DIGITAL SIGNAL PROCESSING LABORATORY



Soobh
PRINCIPAL
Sri Indu College of Engineering and Technology
(Vth): SHERIGUDA-501 510,
Brahmapatnam(M), R.R. Dist.

**DEPARTMENT OF
COMPUTER SCIENCE & ENGINEERING**



Soobh
PRINCIPAL
 Sri Indu College of Engineering and Technology
 (Vill): SHERIGUDA-501 510,
 Brahmapatnam(M), R.R.Dist.



Soobh
PRINCIPAL
 Sri Indu College of Engineering and Technology
 (VIN): 5MERIGUDA-501 510,
 Brahmapatnam(M), R.R.Dist.



Sri Indu
PRINCIPAL
 Sri Indu College of Engineering and Technology
 (VHT): SHERIGUDA-501 510,
 Brahmapatnam(M), R.R.Dist.

**DEPARTMENT OF
MECHANICAL ENGINEERING**

ENGINEERING WORKSHOP LABORATORY



METALURGY AND MECHANICS OF SOLIDS



Soobh
PRINCIPAL
Sri Indu College of Engineering and Technology
(V): SHERIGUDA-501 510,
Brahmapatnam(M), R.R.Dist.

MECHANICS OF FLUIDS & HYDRAULIC MACHINES LAB



PRODUCTION TECHNOLOGY LAB.



Soob
PRINCIPAL
Sri Indu College of Engineering and Technology
(VIR): SHERIGUDA-501 510,
Brahmapatnam(M), R.R. Dist.

MACHINE TOOLS & METROLOGY LAB



THERMAL ENGINEERING LAB



Sush
PRINCIPAL
Sri Indu College of Engineering and Technology
(V): SHERIGUDA-501 510,
Brahmapatnam(M), R.R.Dist.

HEAT TRANSFER LAB



CAD/CAM LAB



Soobh
PRINCIPAL
Sri Indu College of Engineering and Technology
(VIT): SHERIGUDA-501 510,
Brahmapatnam(M), R.R.Dist.

**DEPARTMENT OF
ELECTRICAL & ELECTRONICS ENGINEERING**

ELECTRICAL MEASUREMENTS LAB



CONTROL SYSTEMS & SIMULATION LAB



Sush
PRINCIPAL
Sri Indu College of Engineering and Technology
(VH): SHERIGUDA-501 54.0,
Ibrahimpatnem(M), R.R.Dist.

ELECTRICAL MACHINES LAB



POWER ELECTRONICS & SIMULATION LAB



Sush
PRINCIPAL
Sri Indu College of Engineering and Technology
(Vth): SHERIGUDA-501 54.0,
Brahmapatnam(M), R.R.Dist.

**DEPARTMENT OF
CIVIL ENGINEERING**

SURVEYING LAB - I & II



STRENGTH OF MATERIALS LAB



Sush
PRINCIPAL
Sri Indu College of Engineering and Technology
(V): SHERIGUDA-501 510,
Brahmapatnam(M), R.R.Dist.

MOF & HM LAB



GEOTECHNICAL ENGINEERING LAB



Sri Indu
PRINCIPAL
Sri Indu College of Engineering and Technology
(Vij): SHERIGUDA-501 510,
Brahmapatnam(M), R.R.Dist.

**DEPARTMENT OF
HUMANITIES & SCIENCES**

COMPUTER PROGRAMMING LABORATORY



PHYSICS LABORATORY



Sush
PRINCIPAL
Sri Indu College of Engineering and Technology
(Vth): SHERIGUDA-501 540,
Brahmapatnam(M), R.R.Dist.

CHEMISTRY LABORATORY



ENGLISH COMMUNICATION SKILLS LABORATORY



Sri Indu
PRINCIPAL
Sri Indu College of Engineering and Technology
(Vill): SHERIGUDA-501 54.0,
Ibrahimpatnem(M), R.R.Dist.

Infrastructure & Learning Process

Training & Placement Cell



- Panel Rooms
- Group Discussion Rooms
- Training Hall



Sush
PRINCIPAL
Sri Indu College of Engineering and Technology
(VH): SHERIGUDA-501 540,
Brahmapatnam(M), R.R.Dist.



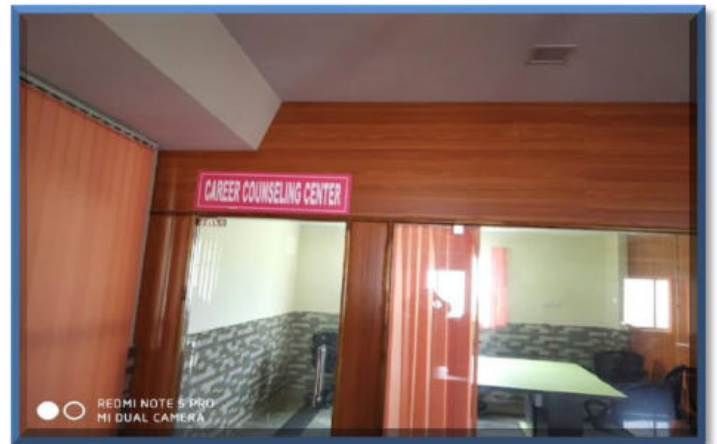
Skill Development Cell



IQAC Cell



Anti Sexual Harassment Cell



Career Counseling Center

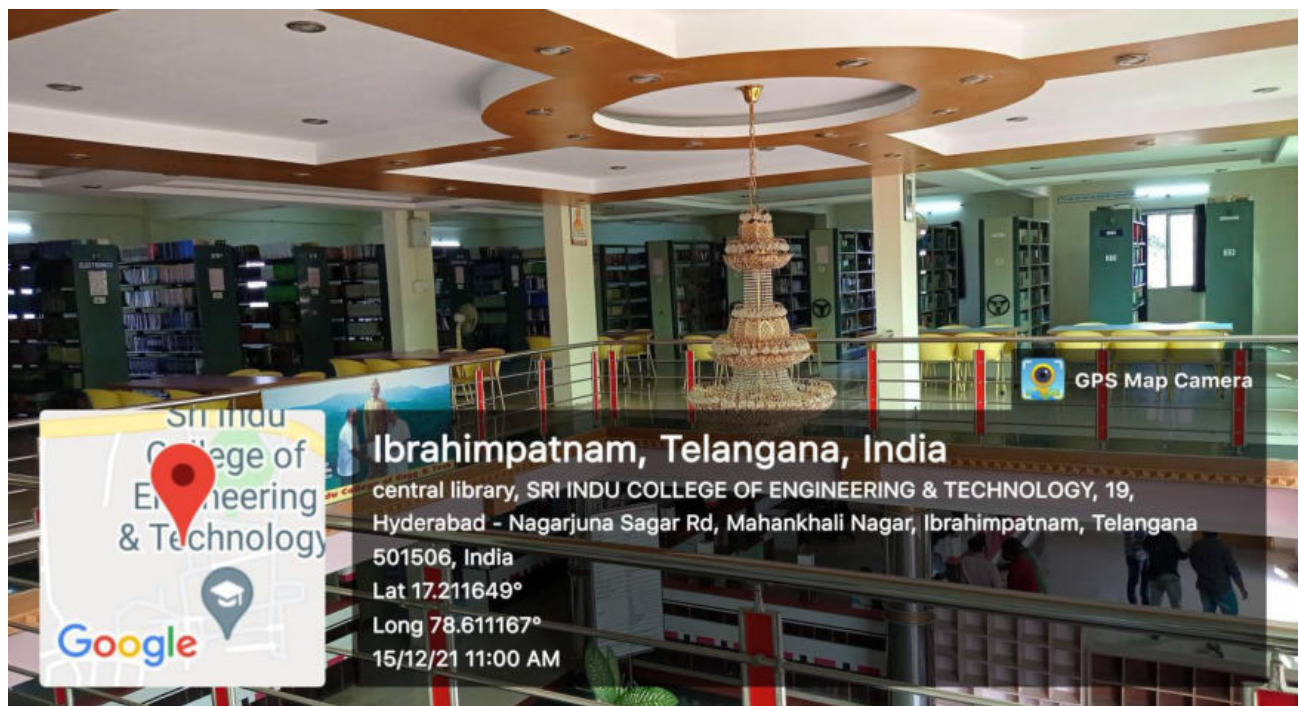


Sush
PRINCIPAL
Sri Indu College of Engineering and Technology
(VIT): SHERIGUDA-501 540,
Brahmapatnam(M), R.R.Dist.

Two Auditoriums – One with area covering 2000 Sq.mts. (Bigger size) which can accommdate over 2000 students and another with an area of 1000 Sq.mts. which can accommdate 1000 students. All the campus functions are conducted in these Auditoriums.



Sush
PRINCIPAL
Sri Indu College of Engineering and Technology
(V): SHERIGUDA-501 510,
Brahmapatnam(M), R.R.Dist.



Saah
PRINCIPAL
 Sri Indu College of Engineering and Technology
 (Vij): SHERIGUDA-501 510,
 Ibrahimpatnam(M), R.R.Dist.



Soobh
PRINCIPAL
 Sri Indu College of Engineering and Technology
 (Vill): SHERIGUDA-501 510,
 Ibrahimpattam(M), R.R.Dist.



Sush
PRINCIPAL
 Sri Indu College of Engineering and Technology
 (VIR): SHERIGUDA-501 510,
 Ibrahimpatnam(M), R.R.Dist.



Shobh

PRINCIPAL

Sri Indu College of Engineering and Technology
(VIR): SHERGUDA-501 510,
Ibrahimpatnam(M), R.R.Dist.