



SRI INDU COLLEGE OF ENGINEERING & TECHNOLOGY

(an Autonomous Institution under UGC, New Delhi)

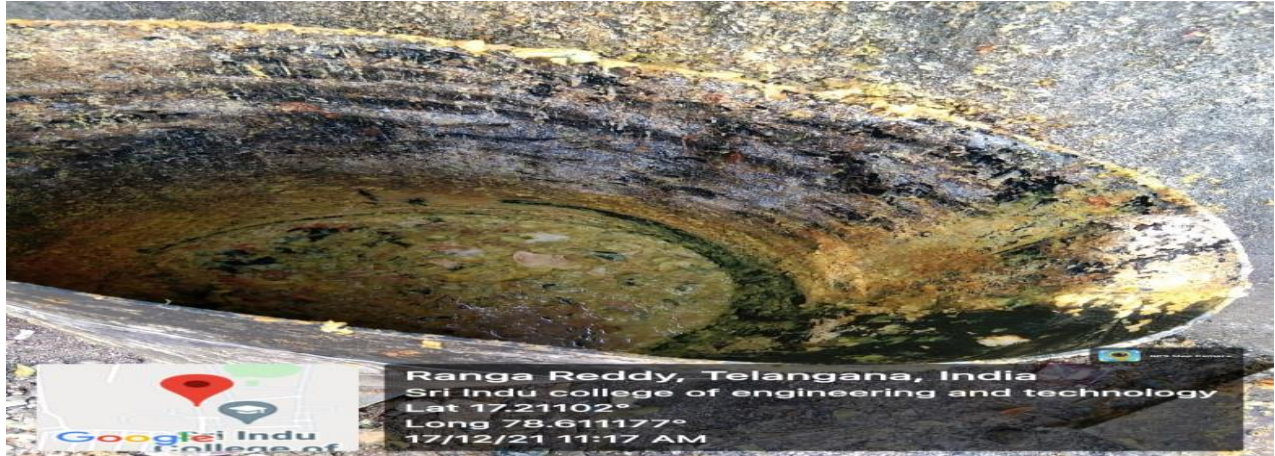
Recognized under 2(f) & 12(B) of UGC Act 1956

Permanently Affiliated to JNTUH, Accredited by NAAC & NBA

Sheriguda(V), Ibrahimpatnam(M), Ranga Reddy Dist. – 501 510

7.1.3 Describe the facilities in the institution for the management of the following types of degradable and non-degradable waste

Solid waste Management



Soobh
PRINCIPAL
Sri Indu College of Engineering and Technology
(VIT): SHERIGUDA-501 510,
Ibrahimpatnam(M), R.R.Dist.



College of Engineering & Technology
Google

Ranga Reddy, Telangana, India
Sri Indu college of engineering and technology
Lat 17.21102°
Long 78.611177°
17/12/21 10:43 AM

DUMPING YARD



GPS Map Camera

Google

Rangareddy, Telangana, India
SRI INDU COLLEGE OF ENGINEERING &
TECHNOLOGY, An Autonomous, Telangana 501510, India
Lat 17.205254°
Long 78.608895°
10/12/22 01:54 PM GMT +05:30



Soobh
PRINCIPAL
Sri Indu College of Engineering and Technology
(VII): SHERIGUDA-501 510,
Brahmapatnam(M), R.R.Dist.



College of Engineering & Technology
Google

Ranga Reddy, Telangana, India
Sri Indu college of engineering and technology
Lat 17.21102°
Long 78.611177°
17/12/21 10:36 AM



College of Engineering & Technology
Google

Ranga Reddy, Telangana, India
Sri Indu college of engineering and technology
Lat 17.21102°
Long 78.611177°
17/12/21 10:37 AM



Sush
PRINCIPAL
Sri Indu College of Engineering and Technology
(M): SHERIGUDA-501 510,
Ibrahimpatnem(M), R.R.Dist.

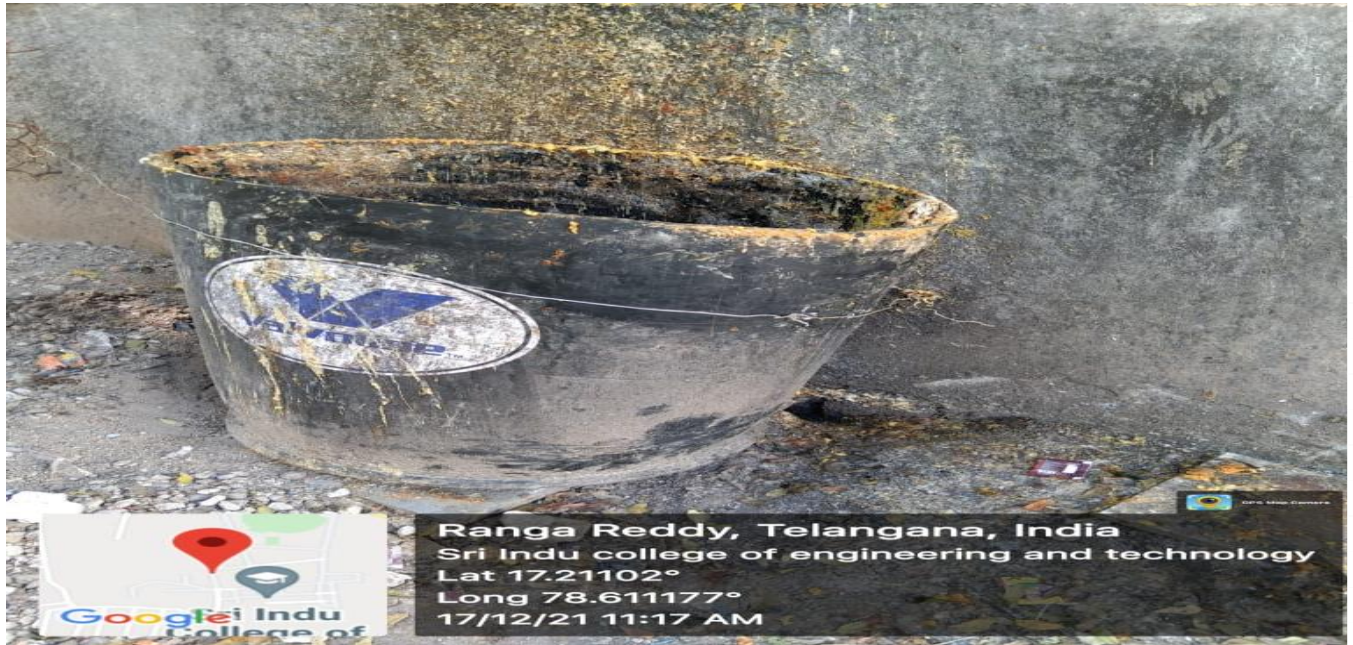


WASTEWATER FLOW CONNECTED TO UNDER GROUND DRAINAGE

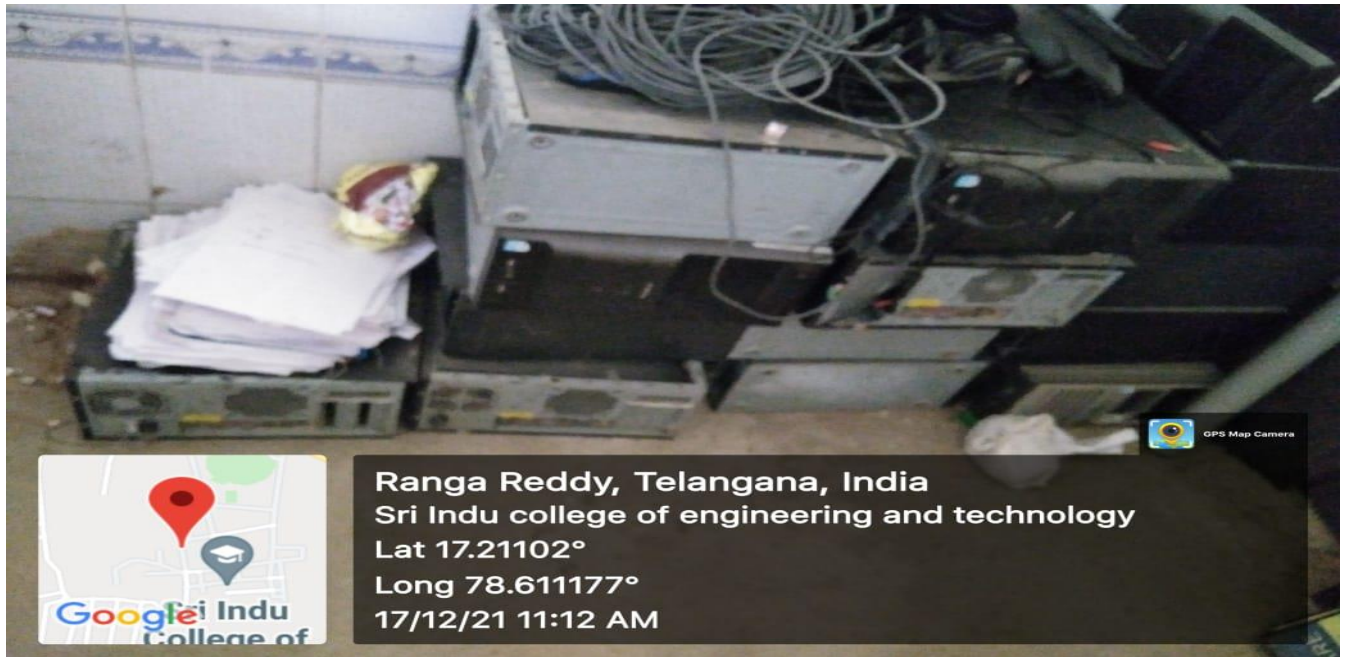


Soobh
PRINCIPAL
Sri Indu College of Engineering and Technology
(VII): SHERGUDA-501 510,
Ibrahimpatnem(M), R.R.Dist.

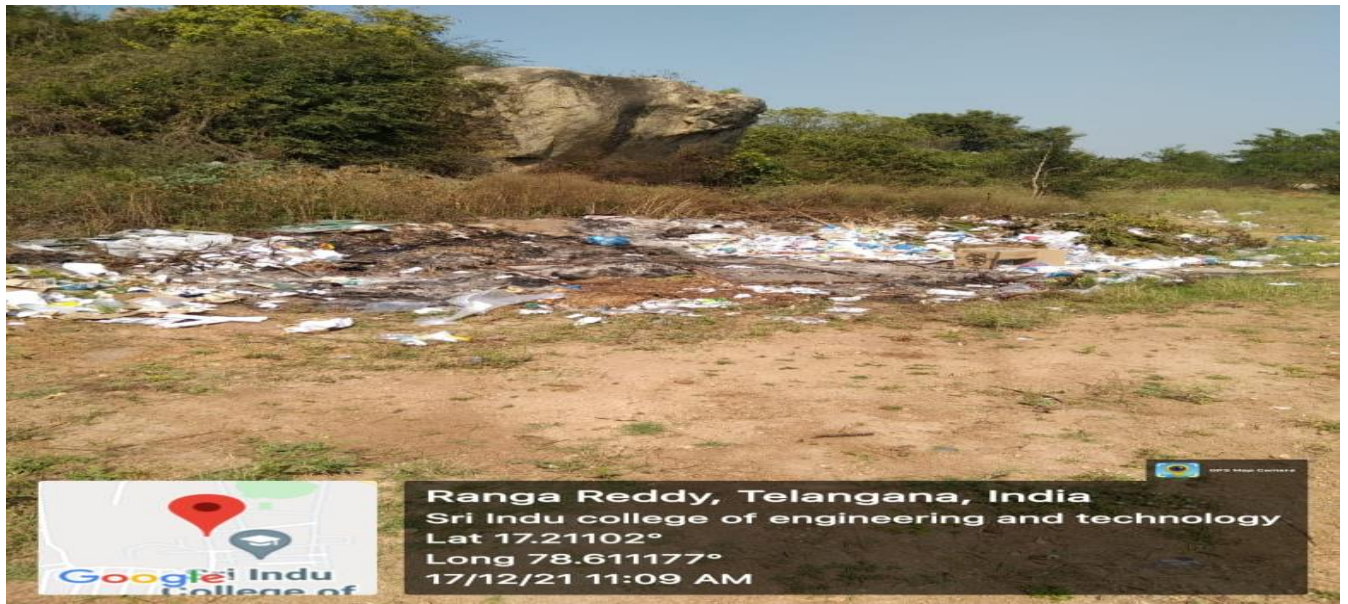
SOLID WASTE FOR COMPOST



E-WASTE DUMP



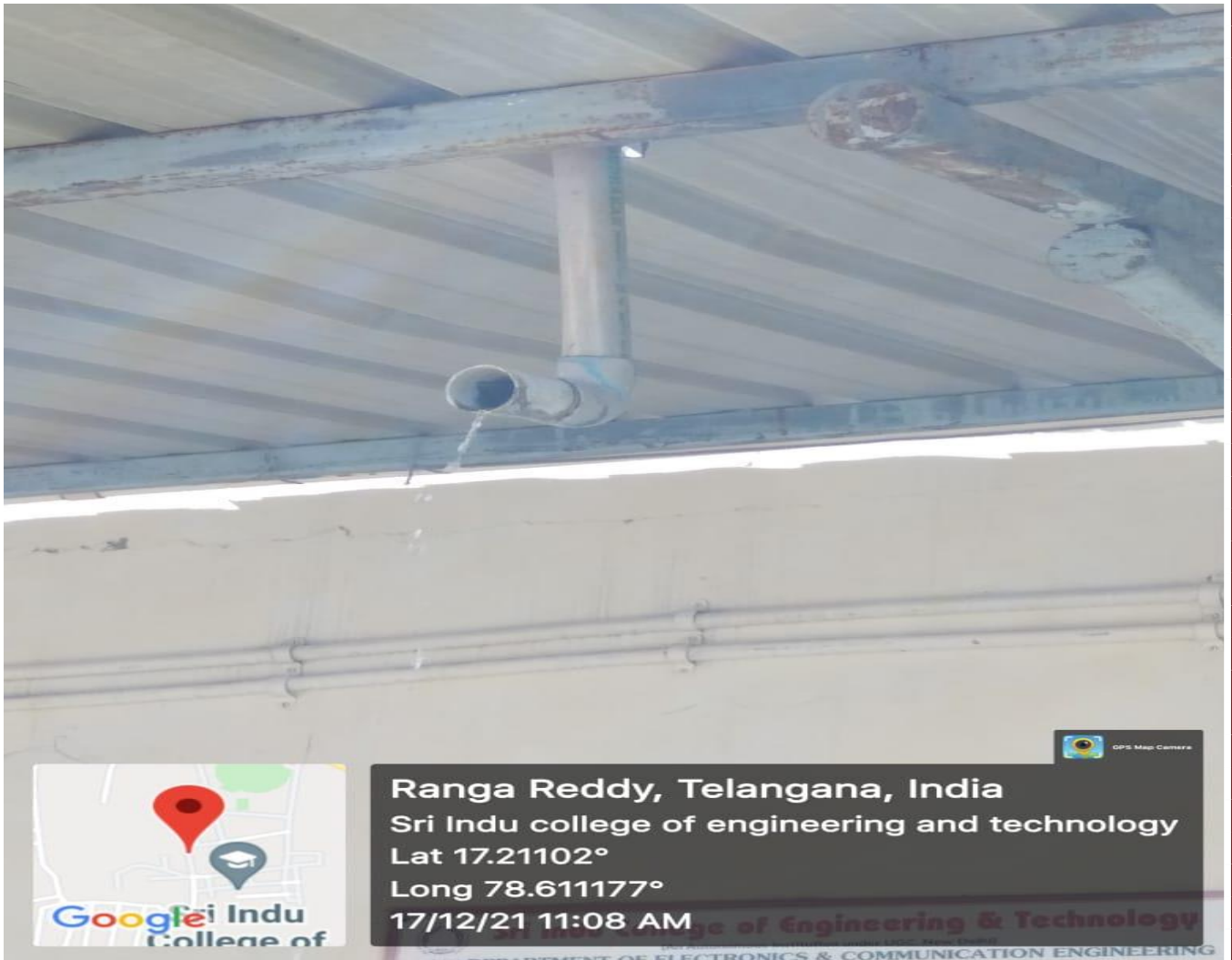
Shobh
PRINCIPAL
Sri Indu College of Engineering and Technology
(VII): SHERIGUDA-501 510,
Ibrahimpatnam(M), R.R.Dist.



WASTEWATER FLOW CONNECTED TO GARDENING



Soobh
PRINCIPAL
Sri Indu College of Engineering and Technology
(VII): SHERGUDA-501 510,
Brahmapatnam(M), R.R.Dist.



Shobh
PRINCIPAL
Sri Indu College of Engineering and Technology
(M): 501 510, Brahmapatnam(M), R.R. Dist.